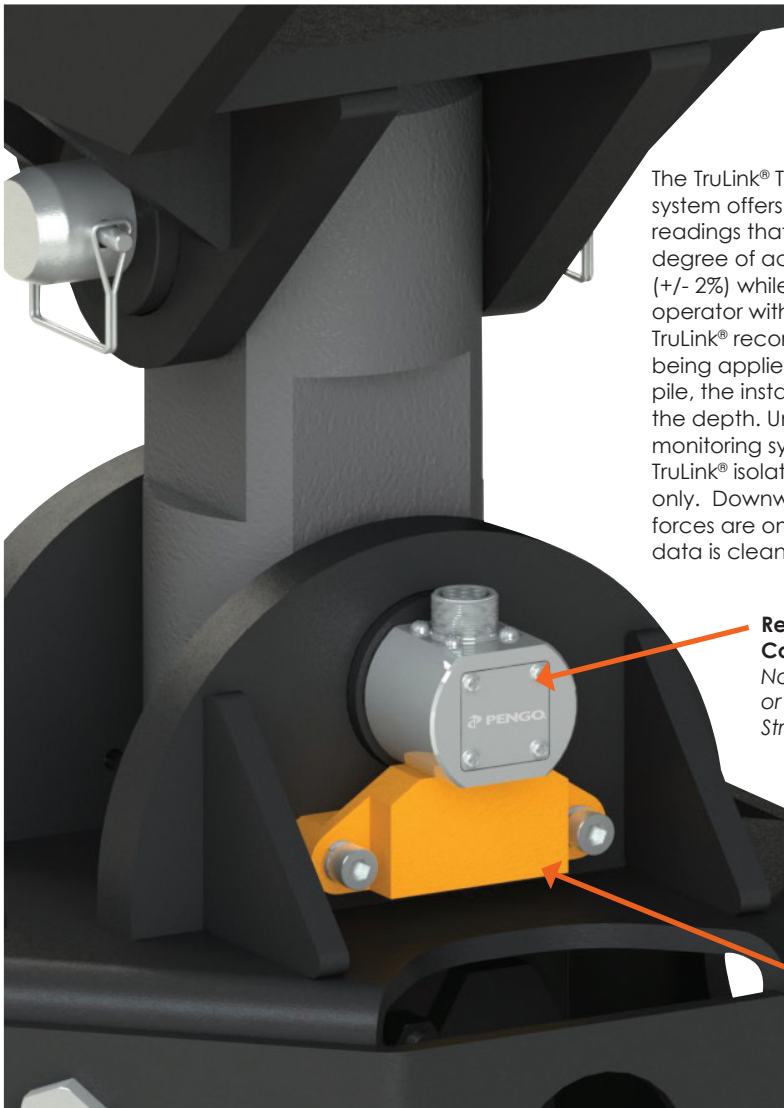


TRULINK[®] TORQUE SYSTEM



The TruLink[®] Torque Pin and Monitor System Offers One-Of-A-Kind Performance and Technology!



The TruLink[®] Torque Monitor system offers true torque readings that deliver a high degree of accuracy (+/- 2%) while providing the operator with real time data. TruLink[®] records actual torque being applied to the helical pile, the installation angle and the depth. Unlike other torque monitoring systems available, TruLink[®] isolates torque values only. Downward and side load forces are omitted ensuring the data is clean.

Replaces Connection Pin
No Added Weight or Height or Loss of Stroke

Includes Anti-Rotation Block for reliability and accuracy.

- **Hard Wired Connection**
Eliminates Interference and Signal Issues Encountered with Wireless Systems
- **Strain Gage Technology**
Not "Inferred" or Calculated as With Hydraulic Systems
- **Downward Force Omitted**
Force is omitted with patented technology that isolates only the torque values

- **Built-in Inclinometer**
Allows Operator to Maintain a Consistent Angle of Insertion
- **Installation Data Recorded**
No Laptop Required to Extract Data
- **Ability to Chart and Record Depth for Each Pile**

TruLink 2.0 with 7" Touch Screen Display

The user interface has been updated for 2017 with the introduction of a 7" color touch tablet. The tablet uses the latest Windows operating system and is embedded within a rugged ABS housing designed to an IP67 protection rating.

All systems come standard with the 7" tablet.

TRULINK[®] Models

TruLink [®] Class 1	TruLink [®] Class 2
Pin Dia 45mm	Pin Dia 75mm
LBS 24	LBS 44
PN 615070	PN 615071
MAX TORQUE 22500 ft/lb	MAX TORQUE 70000 ft/lb

TruLink [®] Class 3	TruLink [®] Class 4
Pin Dia 3.96"	Pin Dia 4.50"
LBS 70	LBS 90
PN 615072	PN 615073
MAX TORQUE 150000 ft/lb	MAX TORQUE 300000 ft/lb

What's In The Box

TruLink[®] Kits include Pin, Displays, Anti-Rotation Block, Mount, Cables and Stylus

TRULINK[®] TORQUE SYSTEM

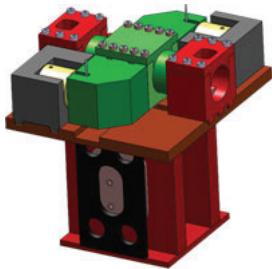


TRULINK[®] CALIBRATION

In order to maintain accurate torque values periodic calibration and recertification is required for all TruLink[®] torque monitoring systems. **All systems require calibration every 1000 hours of use.**

The TruLink[®] Pin will undergo a series of tests to ensure accurate torque values are being produced and that the Pin is returned is as new condition.

With Version 2.0 – the software on the display will automatically update each time the display is re-booted while connected to the Internet via a Bluetooth hotspot or connected to a WiFi network.



**Class 1 & 2
Calibration**

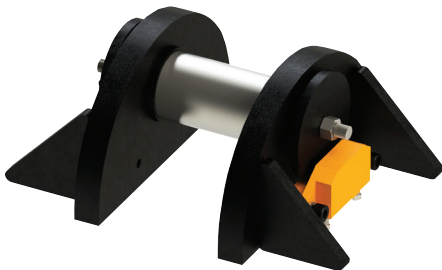
PN | CALLTLC1C2

**Class 3 & 4
Calibration**

PN | CALLTLC3C4

TRULINK[®] ACCESSORIES

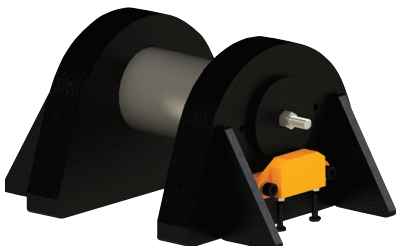
Don't have a Revolutions Series Drive? No problem! Pengo offers two sizes of ear kits so that you may adapt your current drive unit to operate the the TruLink[®] Torque system.



**TruLink[®] Class 1
Ear Kit**

LBS |

PN | 610683



**TruLink[®] Class 2
Ear Kit**

LBS |

PN | 610688