

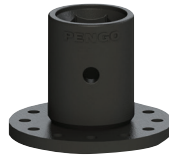
# DRIVE PARTS & ACCESSORIES



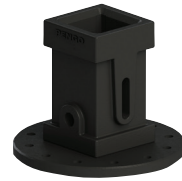
**2" Hex Drive Tool**  
**LBS** | 20  
**PN** | 661342  
 RS-6, RS-6X, RS-7, RS-7X



**2 1/2" Hex Drive Tool**  
**LBS** | 28  
**PN** | 158132  
 DT-5, RS-12, RT-9, RT-12



**3" Hex Drive Tool**  
**LBS** | 35  
**PN** | 158137  
 DT-15, DT-20, RT-20



**4" Square Drive Tool**  
**LBS** | 89  
**PN** | 660951  
 DV-30, RT-30



**130MM Square Drive Tool**  
**LBS** | 127.5  
**PN** | 610301  
 DV-40, RT-40



**150mm Square Drive Tool**  
**LBS** | 226  
**PN** | 610302  
 RV-100



**177mm Square Drive Tool**  
**LBS** | 269  
**PN** | 610303  
 RV-150, RV-200



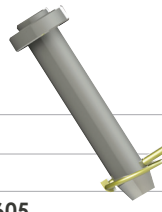
**200mm Square Drive Tool**  
**LBS** | 460  
**PN** | 610304  
 RV-300



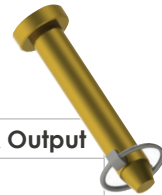
**45MM Pin**  
**LBS** | 1  
**PN** | 620024  
 CS-1, CS-2, CS-3, CS-4,  
 DT-5, DT-15, DV-20, RS-6,  
 RS-7, RS-12, RT-9, RT-12,  
 RT-20



**75MM Pin**  
**LBS** | 19.5  
**PN** | 660554  
 DV-30, DV-40, RT-30,  
 RT-40



**7/8" Pin**  
**LBS** | 4  
**PN** | 151605  
 MS-100, MS-125



**Pin for 2" Hex Output**  
**LBS** | 2  
**PN** | 135015  
 RS-6, RS-6X, RS-7, RS-7X



**45MM Link Arm**  
**LBS** | 7  
**PN** | 623064  
 CS-1, CS-2, CS-3, CS-4,  
 DT-5, DT-15, DV-20,  
 RS-6, RS-7, RS-12, RT-9,  
 RT-12, RT-20



**75MM Link Arm**  
**LBS** | 137  
**PN** | 610202  
 DV-30, DV-40, RT-30,  
 RT-40



**Link Arm Assembly**  
**LBS** | 265  
**PN** | 610709  
 RV-100, RV-150



**Link Arm Assembly**  
**LBS** | 640  
**PN** | 610710  
 RV-200, RV-300