

PRESSURE DIGGER DIRT



AUGERS | 30" Overall Length

ITEM	DIA	NO. 2070 TEETH	NO. 2072 TEETH	LBS	S-250 PN	S-300 PN	S-350 PN	S-400 PN
16-PDD-30	16"	0	2			102945	136338	102991
18-PDD-30	18"	1	2		102535	102946	136339	102992
20-PDD-30	20"	2	2			102947	136340	
24-PDD-30	24"	3	2		102522	136356	136341	102993
28-PDD-30	28"	4	2			136357	102593	102994
30-PDD-30	30"	4	2		102819	102429	136343	102995
36-PDD-30	36"	6	2				136344	102996
42-PDD-30	42"	8	2				136345	102997
48-PDD-30	48"	10	2		102426	102415	136346	
60-PDD-30	60"	18	2				136347	

CAST DIRT HEAD

For Repair of your PDD Auger

Weld-On head for quick field repair.

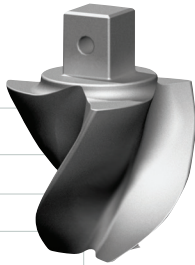


The PENGU Pressure Digger Dirt Augers are built with a heat-treated cast dirt head. These cast heads are high strength and low maintenance.

ITEM	DIA	NO. TEETH	LBS	PN
DIRT 16	16"	1	120	752810
DIRT 18	18"	1	135	752811
DIRT 20	20"	2	153	752812
DIRT 24	24"	3	180	752813
DIRT 36	36"	6	270	752814
DIRT 48	48"	8	345	752815

All Include two 2072 outside gage teeth and 2070 inside teeth.

PARTS | Pilot Bits



Heavy-duty dirt pilot with 2 1/2" square stem for easy installation.

THE NUTS & BOLTS:

Included with the TF-1000 Pilot Bit assembly.

TF-1000
LBS 43
PN 137348
Uses S-250 Pilot Adapter
PN 151598

PARTS | Fas-N-Lok® Dirt Teeth



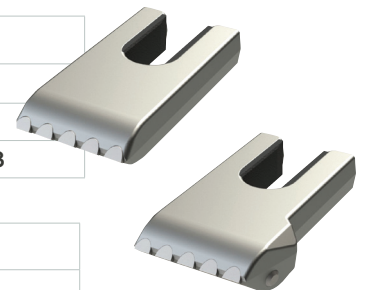
2070 Dirt
LBS 2
PN 140002



2072 Dirt
LBS 2.3
PN 140000

FAS-N-LOK® Dirt Teeth have vulcanized rubber attached to tooth thus making installation quick and easy.

PARTS | Fas-N-Lok® Carbide Teeth



2077
LBS 2.3
PN 140003

2078
LBS 2.4
PN 140004

Drift Punch
LBS .8
PN 137750



Use the Drift Punch for easy removal.