

# AG AGGRESSOR<sup>®</sup> AUGER



## AUGERS | 42" Overall Length

ITEM	DIA	NO. TEETH	LBS	PN
6-LTA-42	6"	2	35	553225
9-LTA-42	9"	4	52	553226
12-LTA-42	12"	4	58	553227

## AUGERS | 48" Overall Length

ITEM	DIA	NO. TEETH	LBS	PN
6-LTA-48	6"	2	45	553228
9-LTA-48	9"	4	52	553229
12-LTA-48	12"	4	68	553230



Pengo Pilots and Teeth are rated for drilling conditions that may or may not be applicable to your power source. Refer to the soil chart listed on page 2 of this catalog to determine which tooth type is right for the job.



## PARTS | Pilot Bits

<b>SB-35 S175</b>
<b>LBS   3.9</b>
<b>PN   151318</b>



The SB-35 two-fluted pilot is ideal for dry soil conditions.

## PARTS | Teeth

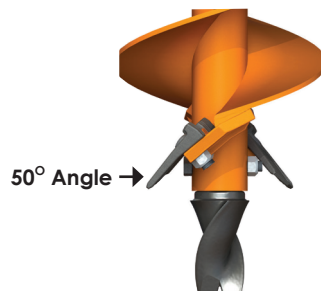
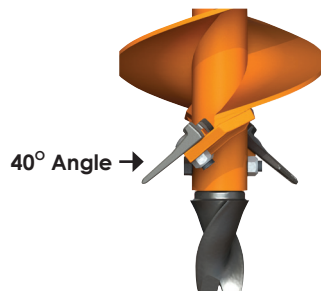
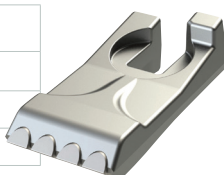
<b>40/50 Tooth</b>
<b>LBS   .5</b>
<b>PN   134501</b>



<b>40/50HFF Tooth</b>
<b>LBS   .5</b>
<b>PN   134802</b>



<b>40/50C Tooth</b>
<b>LBS   .65</b>
<b>PN   134519</b>



AGGRESSOR<sup>®</sup> auger teeth are for use in dirt, abrasive soil or fracturable rock, depending on the type of tooth you are using. All types of the 40/50 tooth can be used at either a 40° or 50° angle providing different attack angles based on your drilling condition.

### THE NUTS & BOLTS:

for 40/50 Teeth  
 Carriage Bolt PN 134677  
 Hex Nut Lock PN 134527

