

RV-100 ANCHOR DRIVE



VARIABLE SPEED DRIVE UNIT | PN 610589

used for anchor installation



EXCAVATOR SIZE

30T - 40T

WEIGHT

LBS | 2850

CONNECTIONS

SQUARE **150MM**

NOT RECOMMENDED FOR DRILLING

TRULINK TORQUE PIN

RV-100 is outfitted to fit this TruLink® Torque Monitor System.



TruLink 2.0 Class 3 with 7" Display
PN | 615072

Kits include Pin, Displays, Anti-Rotation Block, Mount, Cable and Stylus.



The RV-100 Series Variable Speed Drive is strictly for anchor installation due to its ability to generate a high-level of sustained and consistent torque.

HYDRAULIC MOTOR INFORMATION

Displacement	13.73 cu/in (225cc)
Motor Type	Variable Speed Bi-Directional
Motor Output Shaft	13T 8/16 Spline
Motor Mount	SAE - E 4 Bolt
Motor Ports	Code 62 SAE Split Flange
Cross Over Pressure Relief	NA

PLANETARY GEARBOX INFORMATION

Gearbox Type	Planetary Three Stage
Reduction Ratio	126:1
Output Shaft	150mm Square
Internal Oil Capacity	12 Gallons
Oil Type	SAE 80W90 GL-5
Shaft Pull Out (lbs.)	100,000

RV-100 ANCHOR DRIVE

Variable speed models must have a drain line.

REFERENCE SPEED CHART

Flow GPM (Liter)	Low (rpm)	High (rpm)
80 (302)	14	9
90 (370)	16	10
100 (378)	18	11
110 (416)	19	13
120 (454)	21	14

REFERENCE TORQUE CHART (LT / HS)

Pressure (psi)	THEORETICAL Torque (ft/lb)	ACTUAL Torque (ft/lb)
2500	30505	32244
2600	31725	33534
2700	32945	34824
2800	34165	36114
2900	35385	37403

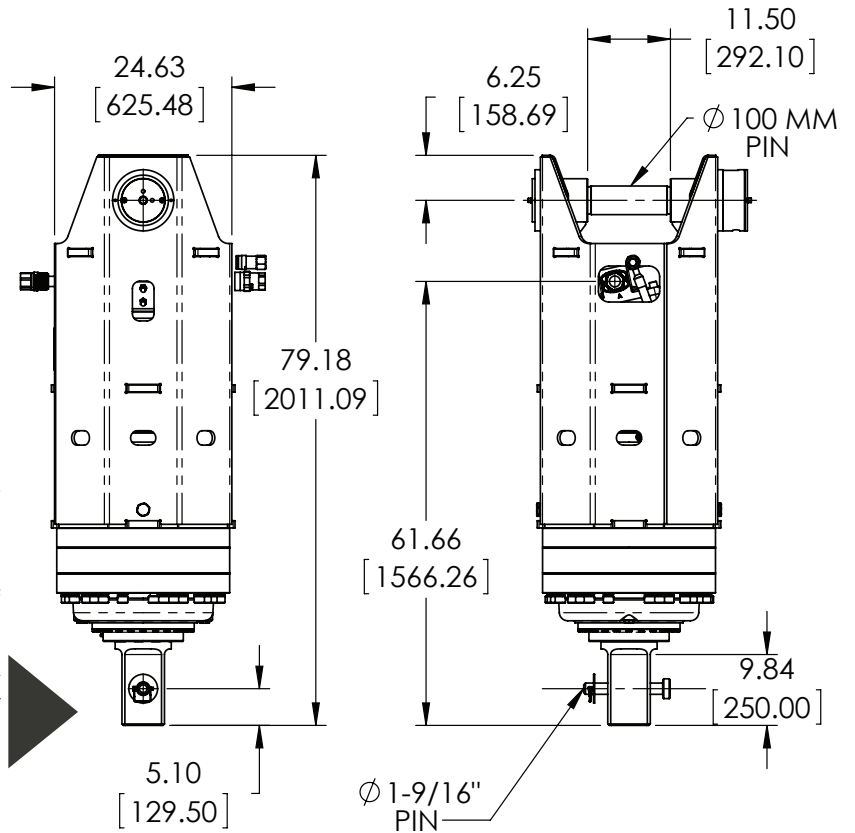
LOW TORQUE/
HIGH SPEED OUTPUT

REFERENCE TORQUE CHART (HT / LS)

Pressure (psi)	THEORETICAL Torque (ft/lb)	ACTUAL Torque (ft/lb)
3100	71193	61226
3200	73489	63201
3300	75786	65176
3400	78082	67151
3500	80379	69126
4000	91862	79001
5000	114827	98751

HIGH TORQUE/
LOW SPEED OUTPUT

Motor will shift once it reached 2900 psi. Need a minimum of 3100 psi to achieve max motor displacement.



Note that both theoretical and actual torque values are listed, but that Pengo recommends to go by ACTUAL torque listings.

150mm Square Drive Tool

LBS | 226

PN | 610302



Link Arm Assembly

LBS | 265

PN | 610709



MOUNTS for RV-100

Pengo offers a complete excavator mounting systems for the RV-100 unit. These mounts can be mounted directly to the stick or designed to work with an existing quick coupler.

Excavator Mounts allow for maximum movement to ensure the Drive always hangs true to the ground.

Custom mounts can be designed for specific applications.

Pengo lists output speeds at both theoretical and actual. Actual torque numbers are NOT listed at 100% efficiency. Maximum efficiencies have been applied to the torque and speed charts according to the manufacturer's recommendations. Speed and torque output are dependent on the overall system efficiencies associated with the prime movers hydraulic system. When the purchaser is determining criteria for specific applications please contact Pengo. Pengo has made every attempt to present accurate and suitable information published in this document. This document should be used for information and comparative purposes only. When application-specific information is required, please contact Pengo.

RV-150 ANCHOR DRIVE



VARIABLE SPEED DRIVE UNIT | PN 610600

used for anchor installation



EXCAVATOR SIZE 35T - 45T	WEIGHT LBS 3800
CONNECTIONS SQUARE 177MM	NOT RECOMMENDED FOR DRILLING

TRULINK TORQUE PIN 

RV-150 is outfitted to fit this TruLink® Torque Monitor System.

TruLink 2.0 Class 3 with 7" Display
PN | 615072

Kits include Pin, Displays, Anti-Rotation Block, Mount, Cable and Stylus.



The RV-150 Series Variable Speed Drive is strictly for anchor installation due to its ability to generate a high-level of sustained and consistent torque.

HYDRAULIC MOTOR INFORMATION	
Displacement	13.73 cu/in (225cc)
Motor Type	Variable Speed Bi-Directional
Motor Output Shaft	13T 8/16 Spline
Motor Mount	SAE - E 4 Bolt
Motor Ports	Code 62 SAE Split Flange
Cross Over Pressure Relief	NA
PLANETARY GEARBOX INFORMATION	
Gearbox Type	Planetary Four Stage
Reduction Ratio	208:54:1
Output Shaft	177mm Square
Internal Oil Capacity	12 Gallons
Oil Type	SAE 80W90 GL-5
Shaft Pull Out (lbs.)	180,000

RV-150 ANCHOR DRIVE

Variable speed models must have a drain line.

REFERENCE SPEED CHART

Flow GPM (Liter)	Low (rpm)	High (rpm)
80 (302)	9	5
90 (370)	10	6
100 (378)	11	7
110 (416)	12	8
120 (454)	13	9

REFERENCE TORQUE CHART (LT / HS)

Pressure (psi)	THEORETICAL Torque (ft/lb)	ACTUAL Torque (ft/lb)
2500	50488	51506
2600	52507	53566
2700	54527	55626
2800	56547	57686
2900	58566	59747

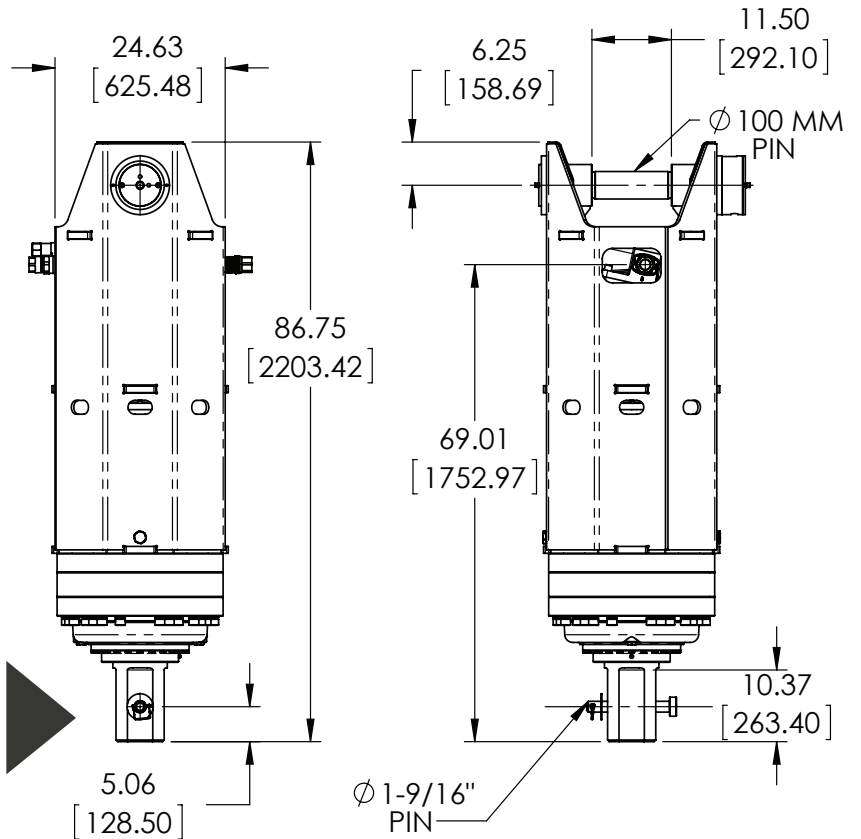
LOW TORQUE/
HIGH SPEED OUTPUT

REFERENCE TORQUE CHART (HT / LS)

Pressure (psi)	THEORETICAL Torque (ft/lb)	ACTUAL Torque (ft/lb)
3100	117830	97799
3200	121631	100954
3300	125432	104109
3400	129233	107263
3500	133034	110418
4000	152039	126192
4500	171044	141967
5000	190049	157741

HIGH TORQUE/
LOW SPEED OUTPUT

Motor will shift once it reached 2900 psi. Need a minimum of 3100 psi to achieve max motor displacement.



Note that both theoretical and actual torque values are listed, but that Pengo recommends to go by ACTUAL torque listings.

177mm Square Drive Tool

LBS | 269

PN | 610303



Link Arm Assembly

LBS | 265

PN | 610709



MOUNTS for RV-150

Pengo offers a complete excavator mounting systems for the RV-150 unit. These mounts can be mounted directly to the stick or designed to work with an existing quick coupler.

Excavator Mounts allow for maximum movement to ensure the Drive always hangs true to the ground.

Custom mounts can be designed for specific applications.

Pengo lists output speeds at both theoretical and actual. Actual torque numbers are NOT listed at 100% efficiency. Maximum efficiencies have been applied to the torque and speed charts according to the manufacturer's recommendations. Speed and torque output are dependent on the overall system efficiencies associated with the prime movers hydraulic system. When the purchaser is determining criteria for specific applications please contact Pengo. Pengo has made every attempt to present accurate and suitable information published in this document. This document should be used for information and comparative purposes only. When application-specific information is required, please contact Pengo.

RV-200 ANCHOR DRIVE



VARIABLE SPEED DRIVE UNIT | PN 610577

used for anchor installation



EXCAVATOR SIZE

45T - 60T

WEIGHT

LBS | 4200

CONNECTIONS

SQUARE **177MM**

NOT RECOMMENDED FOR DRILLING

TRULINK TORQUE PIN

RV-200 is outfitted to fit this TruLink® Torque Monitor System.



TruLink 2.0 Class 4 with 7" Display
PN | 615073

Kits include Pin, Displays, Anti-Rotation Block, Mount, Cable and Stylus.



The RV-200 Series Variable Speed Drive is strictly for anchor installation due to its ability to generate a high-level of sustained and consistent torque.

HYDRAULIC MOTOR INFORMATION

Displacement	13.73 cu/in (225cc)
Motor Type	Variable Speed Bi-Directional
Motor Output Shaft	13T 8/16 Spline
Motor Mount	SAE - E 4 Bolt
Motor Ports	Code 62 SAE Split Flange
Cross Over Pressure Relief	NA

PLANETARY GEARBOX INFORMATION

Gearbox Type	Planetary Four Stage
Reduction Ratio	265.64:1
Output Shaft	177mm Square
Internal Oil Capacity	14.5 Gallons
Oil Type	SAE 80W90 GL-5
Shaft Pull Out (lbs.)	250,000

RV-200 ANCHOR DRIVE

Variable speed models must have a drain line.

REFERENCE SPEED CHART

Flow GPM (Liter)	Low (rpm)	High (rpm)
80 (302)	6	4
90 (370)	7	5
100 (378)	8	5
110 (416)	9	6
120 (454)	10	7

REFERENCE TORQUE CHART (LT / HS)

Pressure (psi)	THEORETICAL Torque (ft/lb)	ACTUAL Torque (ft/lb)
2500	64312	65608
2600	66885	68233
2700	69457	70857
2800	72030	73481
2900	74602	76105

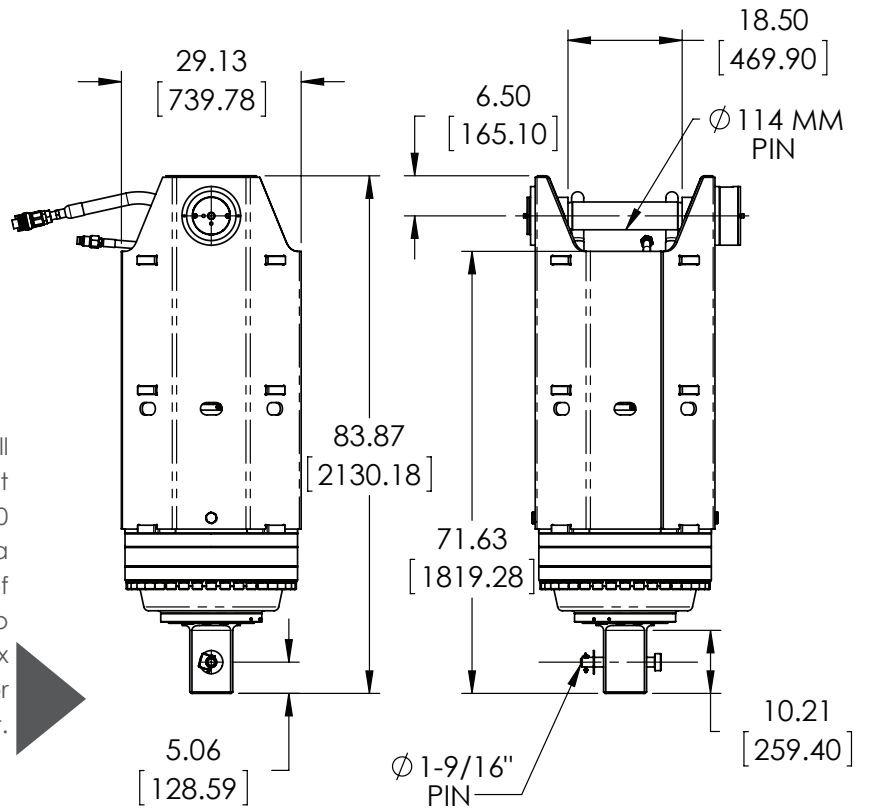
LOW TORQUE/
HIGH SPEED OUTPUT

REFERENCE TORQUE CHART (HT / LS)

Pressure (psi)	THEORETICAL Torque (ft/lb)	ACTUAL Torque (ft/lb)
3100	150026	124522
3200	154866	128539
3300	159706	132556
3400	164545	136572
3500	169385	140590
4000	193583	160674
4500	217780	180757
5000	241978	200842

HIGH TORQUE/
LOW SPEED OUTPUT

Motor will shift once it reached 2900 psi. Need a minimum of 3100 psi to achieve max motor displacement.



Note that both theoretical and actual torque values are listed, but that Pengo recommends to go by ACTUAL torque listings.

177mm Square Drive Tool

LBS | 269

PN | 610303



Link Arm Assembly

LBS | 640

PN | 610710



MOUNTS for RV-200

Pengo offers a complete excavator mounting systems for the RV-200 unit. These mounts can be mounted directly to the stick or designed to work with an existing quick coupler.

Excavator Mounts allow for maximum movement to ensure the Drive always hangs true to the ground.

Custom mounts can be designed for specific applications.

Pengo lists output speeds at both theoretical and actual. Actual torque numbers are NOT listed at 100% efficiency. Maximum efficiencies have been applied to the torque and speed charts according to the manufacturer's recommendations. Speed and torque output are dependent on the overall system efficiencies associated with the prime movers hydraulic system. When the purchaser is determining criteria for specific applications please contact Pengo. Pengo has made every attempt to present accurate and suitable information published in this document. This document should be used for information and comparative purposes only. When application-specific information is required, please contact Pengo.

RV-300 ANCHOR DRIVE



VARIABLE SPEED DRIVE UNIT | PN 610547

used for anchor installation



EXCAVATOR SIZE

60T - 90T

WEIGHT

LBS | 5000

CONNECTIONS

SQUARE
200MM

NOT RECOMMENDED FOR DRILLING

TRULINK TORQUE PIN

RV-300 is outfitted to fit this TruLink® Torque Monitor System.



TruLink 2.0 Class 4 with 7" Display
PN | 615073

Kits include Pin, Displays, Anti-Rotation Block, Mount, Cable, Stylus, and Flash USB Drive



The RV-300 is the largest of anchor drives. It has the ability to power through the largest of anchor installation projects. Due to its ability to generate a high-level of sustained and consistent torque it is not recommended for drilling.

HYDRAULIC MOTOR INFORMATION

Displacement	13.73 cu/in (225cc)
Motor Type	Variable Speed Bi-Directional
Motor Output Shaft	13T 8/16 Spline
Motor Mount	SAE - E 4 Bolt
Motor Ports	Code 62 SAE Split Flange
Cross Over Pressure Relief	NA

PLANETARY GEARBOX INFORMATION

Gearbox Type	Planetary Four Stage
Reduction Ratio	400:1
Output Shaft	200mm Square
Internal Oil Capacity	16.25 Gallons
Oil Type	SAE 80W90 GL-5
Shaft Pull Out (lbs.)	300,000

RV-300 ANCHOR DRIVE

Variable speed models must have a drain line.

REFERENCE SPEED CHART

Flow GPM (Liter)	Low (rpm)	High (rpm)
80 (302)	4	3
90 (370)	4	3
100 (378)	5	4
110 (416)	6	4
120 (454)	7	5

REFERENCE TORQUE CHART (LT / HS)

Pressure (psi)	THEORETICAL Torque (ft/lb)	ACTUAL Torque (ft/lb)
2500	96841	80378
2600	100715	83593
2700	104589	86809
2800	108462	90023
2900	112336	93239

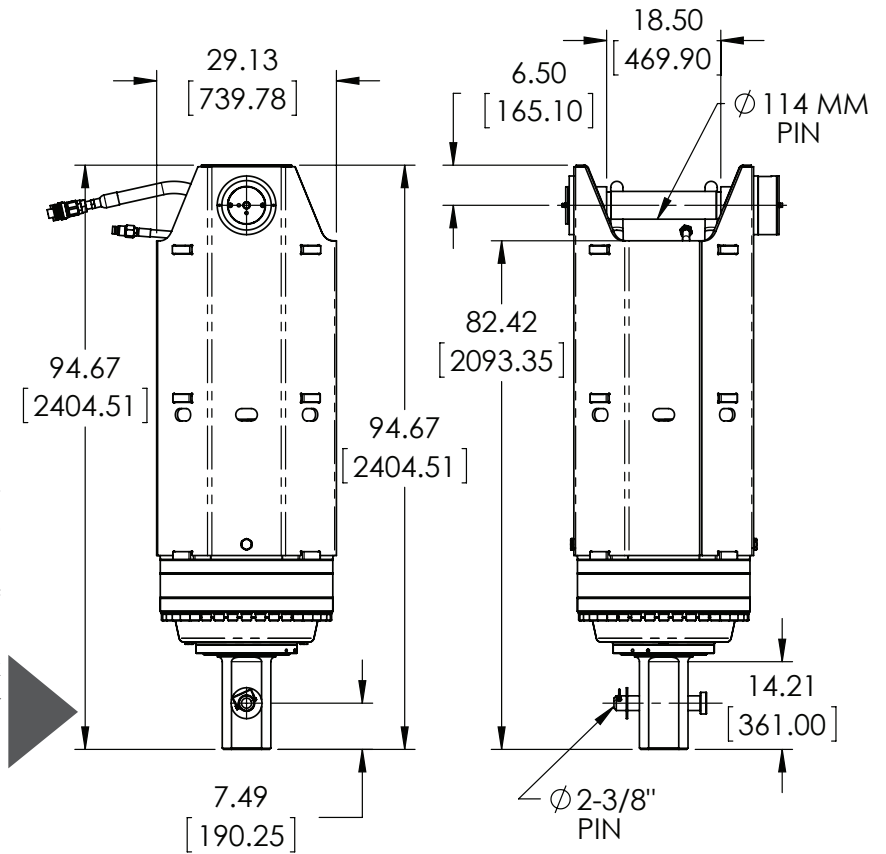
LOW TORQUE/
HIGH SPEED OUTPUT

REFERENCE TORQUE CHART (HT / LS)

Pressure (psi)	THEORETICAL Torque (ft/lb)	ACTUAL Torque (ft/lb)
3100	225910	187505
3200	233197	193554
3300	240484	199602
3400	247772	205651
3500	255059	211699
4000	291496	241942
4500	327933	272184
5000	364371	302428

HIGH TORQUE/
LOW SPEED OUTPUT

Motor will shift once it reached 2900 psi. Need a minimum of 3100 psi to achieve max motor displacement.



Note that both theoretical and actual torque values are listed, but that Pengo recommends to go by ACTUAL torque listings.

200mm Square Drive Tool

LBS | 460

PN | 610304



Link Arm Assembly

LBS | 640

PN | 610710



MOUNTS for RV-300

Pengo offers a complete excavator mounting systems for the RV-300 unit. These mounts can be mounted directly to the stick or designed to work with an existing quick coupler.

Excavator Mounts allow for maximum movement to ensure the Drive always hangs true to the ground.

Custom mounts can be designed for specific applications.

Pengo lists output speeds at both theoretical and actual. Actual torque numbers are NOT listed at 100% efficiency. Maximum efficiencies have been applied to the torque and speed charts according to the manufacturer's recommendations. Speed and torque output are dependent on the overall system efficiencies associated with the prime movers hydraulic system. When the purchaser is determining criteria for specific applications please contact Pengo. Pengo has made every attempt to present accurate and suitable information published in this document. This document should be used for information and comparative purposes only. When application-specific information is required, please contact Pengo.