

RT-9 ANCHOR DRIVE



TWO SPEED DRIVE UNIT | PN 610058

used for anchor installation



EXCAVATOR SIZE

4T - 8T

CONNECTIONS

HEX 2 1/2"

WEIGHT

LBS | 540

NOT RECOMMENDED FOR DRILLING

TRULINK TORQUE PIN

RT-9 is outfitted to fit these TruLink® Torque Monitor Systems.



TruLink 2.0 Class 1 with 7" Display
PN | 615070

Kits include Pin, Displays, Anti-Rotation Block, Mount, Cable and Stylus.



The RT-9 Anchor drive is perfect for the small anchor installation and drilling projects. The auto shift feature allows the drive to automatically shift between high speed and low torque and low speed high torque depending on the input flow. If you chose to use this drive for drilling, select the Pengo TriMax® or Utility auger for best results.

HYDRAULIC MOTOR INFORMATION

Displacement	11.9 cu/in (195cc)
Motor Type	Two Speed Bi-Directional
Motor Output Shaft	1 1/4" Spline 14T
Motor Mount	SAE - C 4 Bolt
Motor Ports	1 5/8" - 12-UN-2B
Cross Over Pressure Relief	Set at 3100 PSI

PLANETARY GEARBOX INFORMATION

Gearbox Type	Planetary Two Stage
Reduction Ratio	25.36:1
Output Shaft	2 1/2" Hex
Internal Oil Capacity	2.0 Gallons
Oil Type	SAE 80W90 GL-5
Shaft Pull Out (lbs.)	22,500

RT-9 ANCHOR DRIVE

2-Speed Models must have a minimum of 20GPM

REFERENCE SPEED CHART

Flow GPM (Liter)	Low (rpm)	High (rpm)
20 (75)	13	25
30 (113)	19	38
40 (151)	25	50
50 (190)	31	63

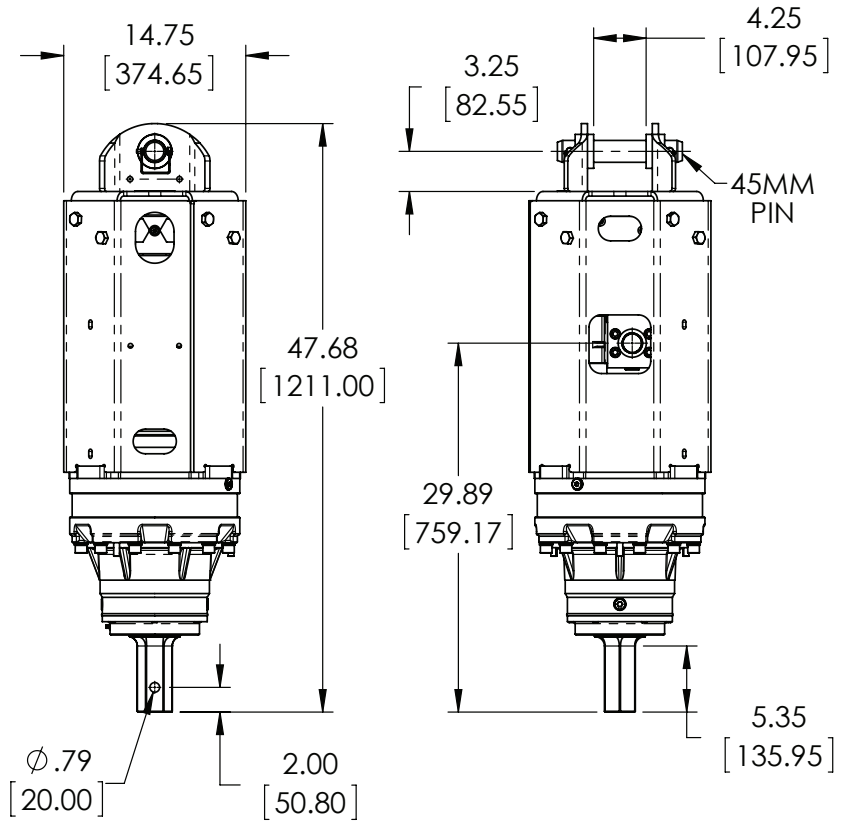
REFERENCE TORQUE CHART (LT / HS)

Pressure (psi)	THEORETICAL Torque (ft/lb)	ACTUAL Torque (ft/lb)
1000	2002	1642
1200	2402	1970
1400	2802	2298
1600	3203	8686
1800	3603	8954
2000	4004	3283
2200	4404	3611
2400	4805	3940
2600	5205	4268
2800	5605	4596
3000	6006	4925

Note that both theoretical and actual torque values are listed, but that Pengo recommends to go by ACTUAL torque listings.

REFERENCE TORQUE CHART (HT / LS)

Pressure (psi)	THEORETICAL Torque (ft/lb)	ACTUAL Torque (ft/lb)
1000	4004	3283
1200	4805	3940
1400	5605	4596
1600	6406	5253
1800	7207	5910
2000	8008	6567
2200	8809	7223
2400	9610	7880
2600	10410	8536
2800	11211	9193
3000	12012	9850



LOW TORQUE/HIGH SPEED OUTPUT

HIGH TORQUE/LOW SPEED OUTPUT

MOUNTS for RT-9

A Pengo Exclusive! The Long Reach Mount for Skid Steer provides maximum ground clearance of 7' to 11' and increased height capability.

Pengo offers a complete excavator mounting systems for the RT-9 unit. These mounts can be mounted directly to the stick or designed to work with an existing quick coupler.

45MM Pin

LBS | 7

PN | 660558

45MM Link Arm

LBS | 46

PN | 660555

2 1/2" Hex Drive Tool

LBS | 28

PN | 158132

Universal Long Reach

LBS | 361

PN | 661318

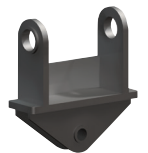
Universal Mount

LBS | 201

PN | 661111



Quick Coupler



End of Stick



Custom mounts can be designed for specific applications.

Excavator Mounts allow for maximum movement to ensure the Drive always hangs true to the ground.

Pengo lists output speeds at both theoretical and actual. Actual torque numbers are NOT listed at 100% efficiency. Maximum efficiencies have been applied to the torque and speed charts according to the manufacturer's recommendations. Speed and torque output are dependent on the overall system efficiencies associated with the prime movers hydraulic system. When the purchaser is determining criteria for specific applications please contact Pengo. Pengo has made every attempt to present accurate and suitable information published in this document. This document should be used for information and comparative purposes only. When application-specific information is required, please contact Pengo.

RT-12 ANCHOR DRIVE



TWO SPEED DRIVE UNIT | PN 610059

used for anchor installation



Removable Top Section →

Standard cross-over pressure relief system that is designed to protect the motor from pressure spikes and potential overload conditions →

Attached Manual Holder for Quick Access →

Highly Efficient Gearbox designed for long duty cycles →

The RT-12 features Auto Shift. This feature allows the drive to automatically shift between high speed/low torque and low speed/high torque depending on the input flow.



2 1/2" Hex Output Shaft →

HYDRAULIC MOTOR INFORMATION

Displacement	14.9 cu/in (244cc)
Motor Type	Two Speed Bi-Directional
Motor Output Shaft	1 1/4" Spline 14T
Motor Mount	SAE - C 4 Bolt
Motor Ports	1 5/8" - 12-UN-2B
Cross Over Pressure Relief	Set at 3100 PSI

PLANETARY GEARBOX INFORMATION

Gearbox Type	Planetary Two Stage
Reduction Ratio	25.36:1
Output Shaft	2 1/2" Hex
Internal Oil Capacity	2.0 Gallons
Oil Type	SAE 80W90 GL-5
Shaft Pull Out (lbs.)	22,500

EXCAVATOR SIZE

6T - 12T

CONNECTIONS

HEX **2 1/2"**

WEIGHT

LBS | 655

NOT RECOMMENDED FOR DRILLING

TRULINK TORQUE PIN

RT-12 is outfitted to fit these TruLink® Torque Monitor Systems.



TruLink 2.0 Class 1 with 7" Display
PN | 615070

Kits include Pin, Displays, Anti-Rotation Block, Mount, Cable and Stylus.



The RT-12 Anchor drive is perfect anchor installation projects when using a skid steer, mini-excavator or backhoe. This drive may also be used for some drilling applications with the Pengo Utility or Excavator auger system.

RT-12 ANCHOR DRIVE

2-Speed Models must have a minimum of 20GPM

REFERENCE SPEED CHART		
Flow GPM (Liter)	Low (rpm)	High (rpm)
20 (75)	10	21
30 (113)	15	32
40 (151)	20	43
50 (190)	25	54

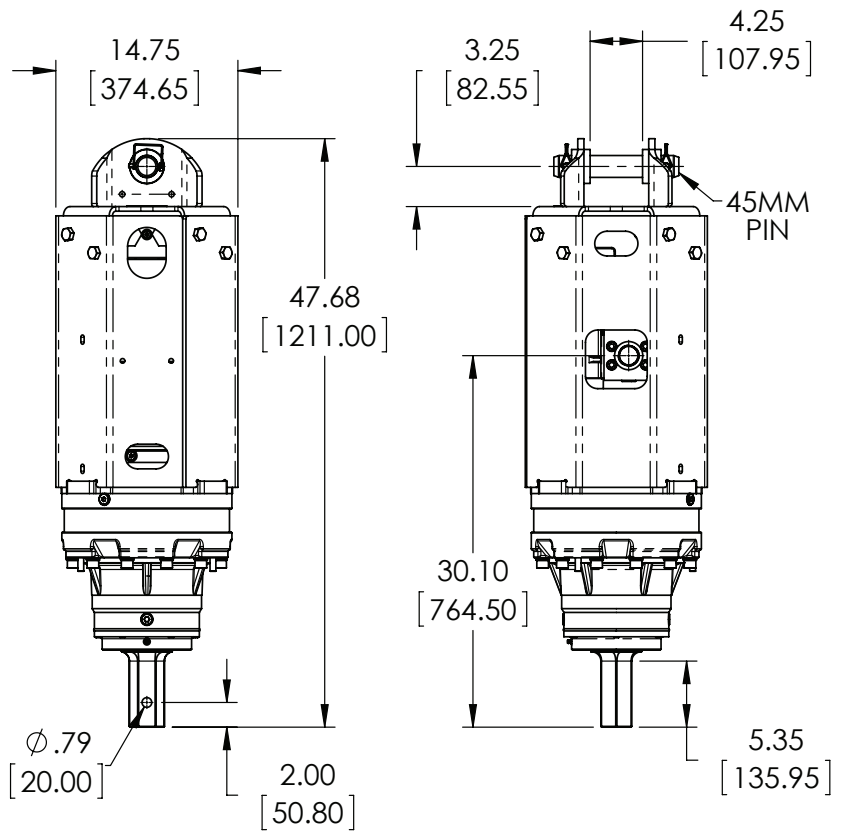
LOW TORQUE/HIGH SPEED OUTPUT

REFERENCE TORQUE CHART (LT / HS)		
Pressure (psi)	THEORETICAL Torque (ft/lb)	ACTUAL Torque (ft/lb)
1000	2338	1917
1200	2806	2301
1400	3274	2685
1600	3742	3068
1800	4209	3451
2000	4677	3835
2200	5145	4219
2400	5613	4603
2600	6081	4986
2800	6548	5369
3000	7016	5753

HIGH TORQUE/LOW SPEED OUTPUT

REFERENCE TORQUE CHART (HT / LS)		
Pressure (psi)	THEORETICAL Torque (ft/lb)	ACTUAL Torque (ft/lb)
1000	5012	4110
1200	6014	4931
1400	7017	5754
1600	8019	6576
1800	9022	7398
2000	10024	8220
2200	11027	9042
2400	12029	9864
2600	13032	10686
2800	14034	11508
3000	15037	12330

Note that both theoretical and actual torque values are listed, but that Pengo recommends to go by ACTUAL torque listings.





MOUNTS for RT-12

A Pengo Exclusive! The Long Reach Mount for Skid Steer provides maximum ground clearance of 7' to 11' and increased height capability.

Pengo offers a complete excavator mounting systems for the RT-12 unit. These mounts can be mounted directly to the stick or designed to work with an existing quick coupler.

	45MM Pin
	LBS 7
	PN 660558
	45MM Link Arm
	LBS 46
	PN 660555
	2 1/2" Hex Drive Tool
	LBS 28
	PN 158132

	Universal Long Reach
	LBS 361
	PN 661318
	Universal Mount
	LBS 201
	PN 661111

	Quick Coupler
	End of Stick

Excavator Mounts allow for maximum movement to ensure the Drive always hangs true to the ground.

Custom mounts can be designed for specific applications.

Pengo lists output speeds at both theoretical and actual. Actual torque numbers are NOT listed at 100% efficiency. Maximum efficiencies have been applied to the torque and speed charts according to the manufacturer's recommendations. Speed and torque output are dependent on the overall system efficiencies associated with the prime movers hydraulic system. When the purchaser is determining criteria for specific applications please contact Pengo. Pengo has made every attempt to present accurate and suitable information published in this document. This document should be used for information and comparative purposes only. When application-specific information is required, please contact Pengo.

RT-20 ANCHOR DRIVE



TWO SPEED DRIVE UNIT | PN 610060

used for anchor installation



EXCAVATOR SIZE

12T - 20T

CONNECTIONS

HEX 3"

WEIGHT

LBS | 855

NOT RECOMMENDED FOR DRILLING

TRULINK TORQUE PIN

RT-20 is outfitted to fit these TruLink® Torque Monitor Systems.



TruLink 2.0 Class 1 with 7" Display
PN | 615070

Kits include Pin, Displays, Anti-Rotation Block, Mount, Cable and Stylus.



When the job calls for larger anchor installation using a backhoe or excavator turn to the RT-20. The auto shift feature allows the drive to automatically shift between high speed and low torque and low speed high torque depending on the input flow.

HYDRAULIC MOTOR INFORMATION

Displacement	11.9 cu/in (195cc)
Motor Type	Two Speed Bi-Directional
Motor Output Shaft	1 1/4" Spline 14T
Motor Mount	SAE - C 4 Bolt
Motor Ports	1 5/8" - 12-UN-2B
Cross Over Pressure Relief	Set at 3100 PSI

PLANETARY GEARBOX INFORMATION

Gearbox Type	Planetary Three Stage
Reduction Ratio	60.56:1
Output Shaft	3 1/2" Hex
Internal Oil Capacity	3.0 Gallons
Oil Type	SAE 80W90 GL-5
Shaft Pull Out (lbs.)	45,000

RT-20 ANCHOR DRIVE

2-Speed Models must have a minimum of 20GPM

REFERENCE SPEED CHART

Flow GPM (Liter)	Low (rpm)	High (rpm)
20 (75)	5	10
30 (113)	8	15
40 (151)	10	20
50 (190)	13	25

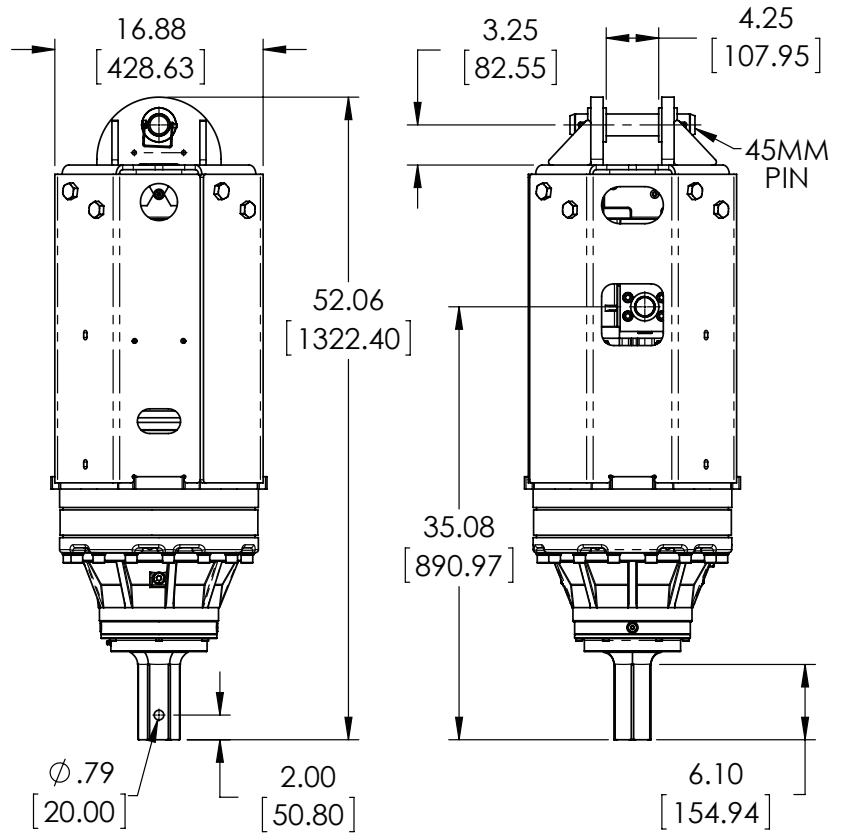
REFERENCE TORQUE CHART (LT / HS)

Pressure (psi)	THEORETICAL Torque (ft/lb)	ACTUAL Torque (ft/lb)
1000	4781	3777
1200	5737	4532
1400	6693	5287
1600	7649	6043
1800	8605	6798
2000	9562	7554
2200	10518	8309
2400	11474	9064
2600	12430	9820
2800	13386	10575
3000	14343	11331

Note that both theoretical and actual torque values are listed, but that Pengo recommends to go by ACTUAL torque listings.

REFERENCE TORQUE CHART (HT / LS)

Pressure (psi)	THEORETICAL Torque (ft/lb)	ACTUAL Torque (ft/lb)
1000	9562	7554
1200	11474	9064
1400	13386	10575
1600	15299	12086
1800	17211	13597
2000	19124	15108
2200	21036	16618
2400	22948	18129
2600	24861	19640
2800	26773	21151
3000	28686	22662



LOW TORQUE/HIGH SPEED OUTPUT

HIGH TORQUE/LOW SPEED OUTPUT

MOUNTS for RT-20

Pengo offers a complete excavator mounting systems for the RT-20 unit. These mounts can be mounted directly to the stick or designed to work with an existing quick coupler.

Custom mounts can be designed for specific applications.



Excavator Mounts allow for maximum movement to ensure the Drive always hangs true to the ground.

45MM Pin

LBS | 7

PN | 660558

45MM Link Arm

LBS | 46

PN | 660555

3" Hex Drive Tool

LBS | 35

PN | 158137

Pengo lists output speeds at both theoretical and actual. Actual torque numbers are NOT listed at 100% efficiency. Maximum efficiencies have been applied to the torque and speed charts according to the manufacturer's recommendations. Speed and torque output are dependent on the overall system efficiencies associated with the prime movers hydraulic system. When the purchaser is determining criteria for specific applications please contact Pengo. Pengo has made every attempt to present accurate and suitable information published in this document. This document should be used for information and comparative purposes only. When application-specific information is required, please contact Pengo.

RT-30 ANCHOR DRIVE



VARIABLE SPEED DRIVE UNIT | PN 610061

used for anchor installation



EXCAVATOR SIZE

15T - 25T

WEIGHT

LBS | 1220

CONNECTIONS

SQUARE
4"

NOT RECOMMENDED FOR DRILLING

TRULINK TORQUE PIN

RT-30 is outfitted to fit these TruLink® Torque Monitor Systems.



TruLink 2.0 Class 2 with 7" Display
PN | 615071

Kits include Pin, Displays, Anti-Rotation Block, Mount, Cable and Stylus.



Use The RT-30 Anchor drive for larger projects with an excavator. The auto shift feature allows the drive to automatically shift between high speed and low torque and low speed high torque depending on the input flow.

HYDRAULIC MOTOR INFORMATION

Displacement	13.9 cu/in (195cc)
Motor Type	Two Speed Bi-Directional
Motor Output Shaft	1 1/4" Spline 14T
Motor Mount	SAE - C 4 Bolt
Motor Ports	1 5/8" - 12-UN-2B
Cross Over Pressure Relief	Set at 3100 PSI

PLANETARY GEARBOX INFORMATION

Gearbox Type	Planetary Three Stage
Reduction Ratio	69.7:1
Output Shaft	4" Square
Internal Oil Capacity	3.1 Gallons
Oil Type	SAE 80W90 GL-5
Shaft Pull Out (lbs.)	60,000

RT-30 ANCHOR DRIVE

2-Speed Models must have a minimum of 20GPM

REFERENCE SPEED CHART

Flow GPM (Liter)	Low (rpm)	High (rpm)
20 (75)	4	8
30 (113)	6	11
40 (151)	8	15
50 (190)	9	19

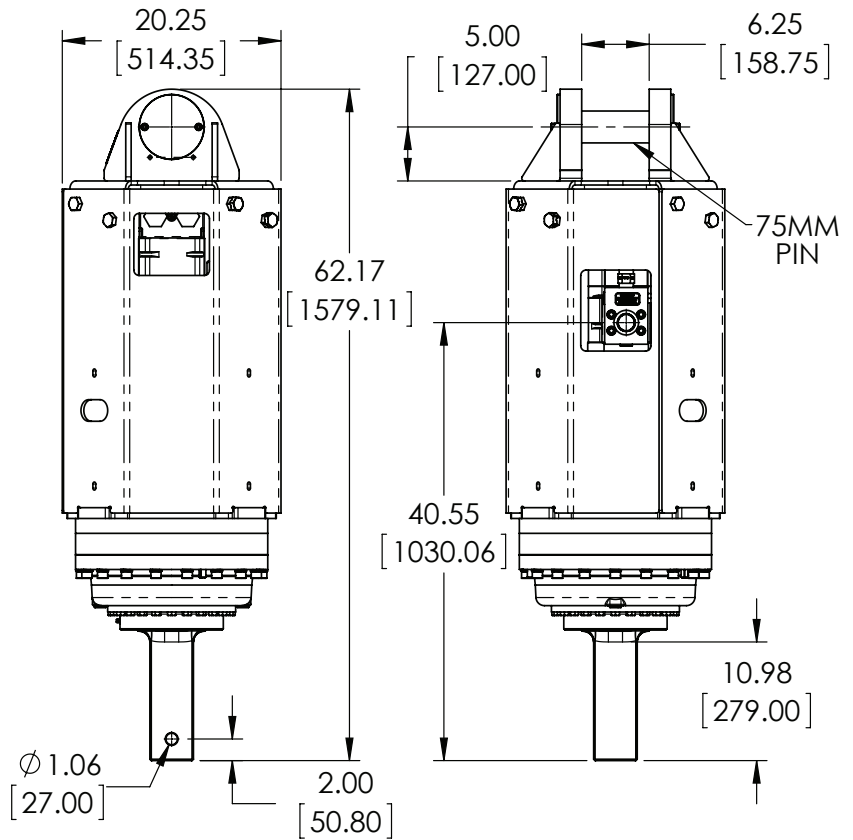
REFERENCE TORQUE CHART (LT / HS)

Pressure (psi)	THEORETICAL Torque (ft/lb)	ACTUAL Torque (ft/lb)
1000	6428	5078
1200	7713	6093
1400	8999	7109
1600	10285	8125
1800	11570	9140
2000	12856	10156
2200	14141	11171
2400	15427	12187
2600	16713	13203
2800	17998	14218
3000	19284	15234

Note that both theoretical and actual torque values are listed, but that Pengo recommends to go by ACTUAL torque listings.

REFERENCE TORQUE CHART (HT / LS)

Pressure (psi)	THEORETICAL Torque (ft/lb)	ACTUAL Torque (ft/lb)
1000	12856	10156
1200	15427	12187
1400	17998	14210
1600	20570	16250
1800	23141	18281
2000	25712	20312
2200	28283	22344
2400	30855	24375
2600	33426	26407
2800	35997	28438
3000	38569	30470



LOW TORQUE/HIGH SPEED OUTPUT

HIGH TORQUE/LOW SPEED OUTPUT

MOUNTS for RT-30

Pengo offers a complete excavator mounting systems for the RT-30 unit. These mounts can be mounted directly to the stick or designed to work with an existing quick coupler.

Custom mounts can be designed for specific applications.



Excavator Mounts allow for maximum movement to ensure the Drive always hangs true to the ground.

75MM Pin

LBS | 10

PN | 660554

75MM Link Arm

LBS | 137

PN | 610202

4" Square Drive Tool

LBS | 35

PN | 660951

Pengo lists output speeds at both theoretical and actual. Actual torque numbers are NOT listed at 100% efficiency. Maximum efficiencies have been applied to the torque and speed charts according to the manufacturer's recommendations. Speed and torque output are dependent on the overall system efficiencies associated with the prime movers hydraulic system. When the purchaser is determining criteria for specific applications please contact Pengo. Pengo has made every attempt to present accurate and suitable information published in this document. This document should be used for information and comparative purposes only. When application-specific information is required, please contact Pengo.

RT-40 ANCHOR DRIVE



TWO SPEED DRIVE UNIT | PN 610480

used for anchor installation



EXCAVATOR SIZE

15T - 25T

WEIGHT

LBS | 1440

CONNECTIONS

SQUARE
130MM

NOT RECOMMENDED
FOR DRILLING

TRULINK TORQUE PIN

RT-40 is outfitted to fit these TruLink® Torque Monitor Systems.



TruLink 2.0 Class 2
with 7" Display
PN | 615071

Kits include Pin, Displays, Anti-Rotation Block, Mount, Cable and Stylus.



The RT-40 Anchor drive is perfect for the larger anchor installation projects when using an excavator. The auto shift feature allows the drive to automatically shift between high speed and low torque and low speed high torque depending on the input flow.

HYDRAULIC MOTOR INFORMATION

Displacement	15.8 cu/in (195cc)
Motor Type	Two Speed Bi-Directional
Motor Output Shaft	1 1/4" Spline 14T
Motor Mount	SAE - C 4 Bolt
Motor Ports	1 5/8" - 12-UN-2B
Cross Over Pressure Relief	Set at 3100 PSI

PLANETARY GEARBOX INFORMATION

Gearbox Type	Planetary Three Stage
Reduction Ratio	83.78:1
Output Shaft	130mm Square
Internal Oil Capacity	4 Gallons
Oil Type	SAE 80W90 GL-5
Shaft Pull Out (lbs.)	60,000

RT-40 ANCHOR DRIVE

2-Speed Models must have a minimum of 20GPM

REFERENCE SPEED CHART

Flow GPM (Liter)	Low (rpm)	High (rpm)
20 (75)	3	6
30 (113)	4	9
40 (151)	6	12
50 (190)	7	15

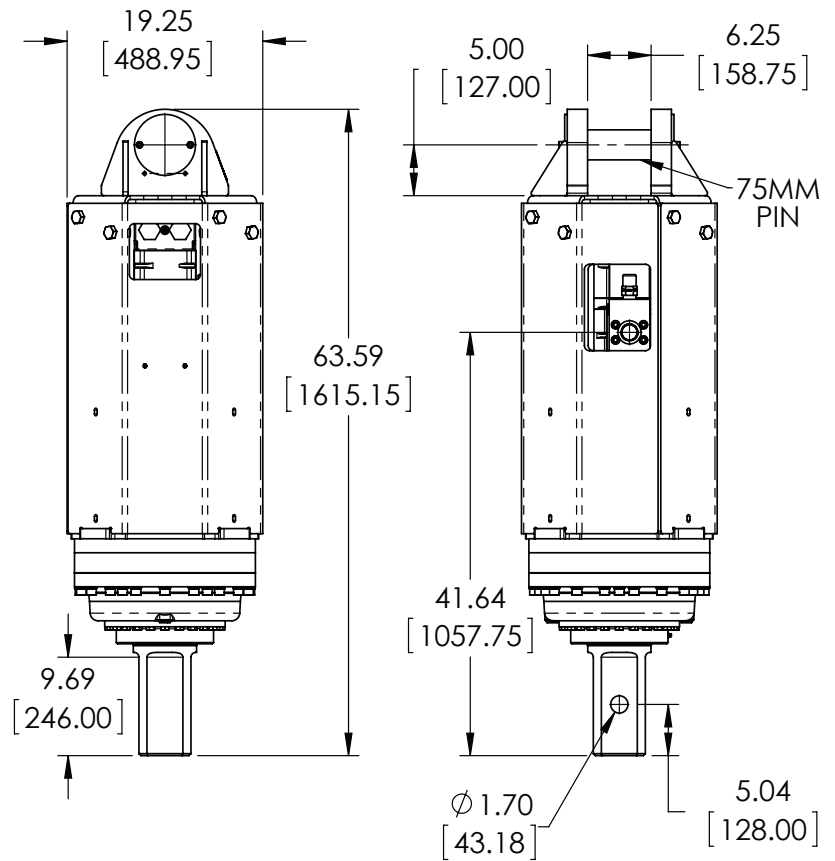
REFERENCE TORQUE CHART (LT / HS)

Pressure (psi)	THEORETICAL Torque (ft/lb)	ACTUAL Torque (ft/lb)
1000	7726	6104
1200	9272	4325
1400	10817	8545
1600	12362	9766
1800	13908	10987
2000	15453	12208
2200	16998	13428
2400	18544	14650
2600	20089	15870
2800	21634	17091
3000	23180	18312

Note that both theoretical and actual torque values are listed, but that Pengo recommends to go by ACTUAL torque listings.

REFERENCE TORQUE CHART (HT / LS)

Pressure (psi)	THEORETICAL Torque (ft/lb)	ACTUAL Torque (ft/lb)
1000	17664	13955
1200	21197	16746
1400	24730	19537
1600	28263	22328
1800	31796	25119
2000	35329	27910
2200	38862	30701
2400	42395	33492
2600	45928	36283
2800	49461	39074
3000	52994	41865



LOW TORQUE/HIGH SPEED OUTPUT

HIGH TORQUE/LOW SPEED OUTPUT

MOUNTS for RT-40

Pengo offers a complete excavator mounting systems for the RT-40 unit. These mounts can be mounted directly to the stick or designed to work with an existing quick coupler.

Custom mounts can be designed for specific applications.



Excavator Mounts allow for maximum movement to ensure the Drive always hangs true to the ground.

75MM Pin

LBS | 10

PN | 660554

75MM Link Arm

LBS | 137

PN | 610202

130MM SQ Drive Tool

LBS | 35

PN | 610301

Pengo lists output speeds at both theoretical and actual. Actual torque numbers are NOT listed at 100% efficiency. Maximum efficiencies have been applied to the torque and speed charts according to the manufacturer's recommendations. Speed and torque output are dependent on the overall system efficiencies associated with the prime movers hydraulic system. When the purchaser is determining criteria for specific applications please contact Pengo. Pengo has made every attempt to present accurate and suitable information published in this document. This document should be used for information and comparative purposes only. When application-specific information is required, please contact Pengo.