

REVOLUTION[®] MOUNTS

Looking for a mounting plate for your skid steer unit? Look no further. Pengo offers two styles of universal skid steer mounts. The standard mount is ideal for smaller units and when needing to maximize ground clearance choose the Long Reach mount. Both mounts attach easily to the skid steer and will accommodate both Pengo and non-Pengo drive units.

LONG REACH MOUNT

Attachment Plate connects to the mounting plate on the front of the skid loader. The link arm connects to both the attachment plate and the drive unit with the supplied connection pins.

**Boom Provides 7' to 11' →
Maximum Ground Clearance**
Clearance varies based on which drive unit is being used.

Universal Long Reach
LBS 361
PN 661318



← **Unique Design Optimizes the Operators Visibility**
Drive is Positioned up to 48" from front of skid loader.

← **Easily Store Mount and Drive Unit**
Free-standing mount. Drive Unit Sold Separately.

↗ **Standard Retractable Stabilizer Arms**
Allows the drive attachment to stand upright when not in use.

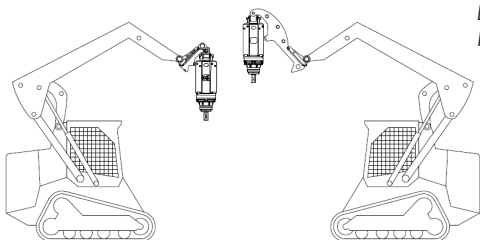
UNIVERSAL SKID STEER MOUNT

Attachment Plate connects to the mounting plate on the front of the skid loader. The link arm connects to both the attachment plate and the drive unit with the supplied connection pins.

Universal Mount
LBS 201
PN 661111



← **Ideal for Smaller Drive Units**
DS-2, DS-3 and RS-7 Recommended



Skid Steer with Standard Mount

Skid Steer with Long Reach Mount

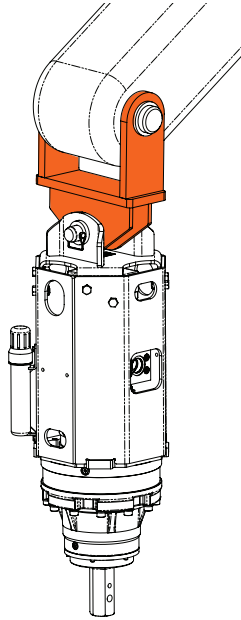


REVOLUTION[®] MOUNTS

END OF STICK

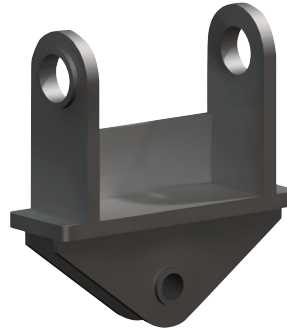
Mounting Bracket connects directly to the boom with customer-supplied connection pin.

The drive unit connects to the mounting bracket with supplied connection pin.

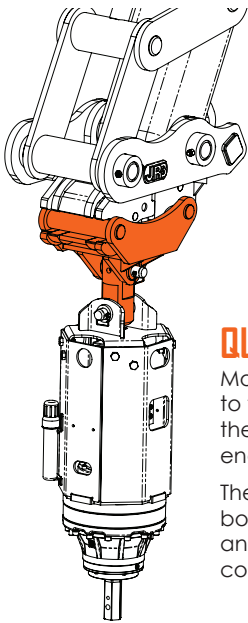


Pin the Mounting Bracket Directly to Boom of Prime Mover →

Link Arms Are Not Used With This Mount →



← For Use on Excavator or Backhoe



QUICK COUPLER

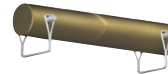
Mounting Bracket connects to the quick coupler when the jaws of the quick coupler engage the pins.

The link arm connects to both the mounting bracket and drive unit with supplied connection pins.



← Refers to Connection at the End of The Boom Equipment

Allows for Connection to Attachment from Operator's Cab, "Automatic Connection" →



← Requires Link Arm and Two Connection Pins



← For Use on Excavator or Backhoe



Pengo offers a complete mounting system for all sizes of excavators. These can be mounted directly to the boom or designed to work with an existing quick coupler. Excavator mounts allow for maximum movement to ensure the drive always hangs true to the ground. Pengo's mounts are available for the entire range of Revolution Series Drive Units.

Custom mounts can be designed for specific applications.