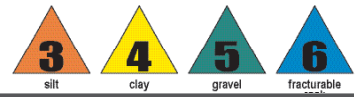


# SEVERE ROCK RIPPER<sup>®</sup> AUGER



## AUGERS | 48" OAL

42" OAL

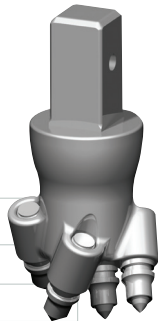
48" OAL

2" HEX

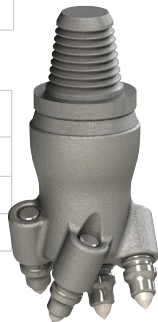
ITEM	DIA	NO. TEETH	LBS	PN
6-SRR	6"	8		157440
9-SRR	8"	10		157441
10-SRR	10"	10		157449
12-SRR	12"	12		157443
14-SRR	14"	14		157444
16-SRR	16"	15		157445
18-SRR	18"	16		157446
20-SRR	20"	17		157447
24-SRR	24"	20		157448
30-SRR	30"	24		CALL
36-SRR	36"	26		CALL

LBS	PN
80	137950
108	137951
	CALL
135	137952
	CALL
170	137953
192	137954
220	137955
285	137956
345	137957
415	137958

## PARTS | Pilot Bits



**RRP 1.75 SQ**  
**LBS | 15**  
**PN | 137208**  
 Use 1.75SQ Adapter **PN | 137203**



**RRP-API**  
**LBS | 18**  
**PN | 157406**

### THE NUTS & BOLTS:

Included with the RRP 1.75 SQ Pilot.

When purchased individually, this pilot ships with four Strata<sup>®</sup> SR-76SW conical teeth.



Heavy-duty Rock Drilling Pilot Bit will penetrate in your hard rock drilling conditions.

## PARTS | Conical Teeth



**S-RL08**  
 Standard Rock Tooth for hard rock applications  
**LBS | .7**  
**PN | 850032**

### P-10 Pocket

.86 Shank pocket for PRL-08 and SR-76SW Conical Teeth

**LBS | .8**  
**PN | 990043**



## ACCESSORIES:

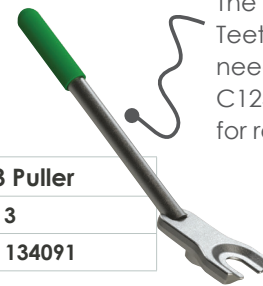


**Soft Hammer**  
**LBS | 3.5**  
**PN | 137737**

STRATA<sup>®</sup> Conical teeth are made with a fragile carbide tip. Pengo<sup>®</sup> strongly recommends using a Soft Hammer when installing STRATA<sup>®</sup> teeth.

Due to the enlarged shoulder of the SR-76SW Strata<sup>®</sup> Tooth, the C30 Puller is recommended to aid in removing the tooth.

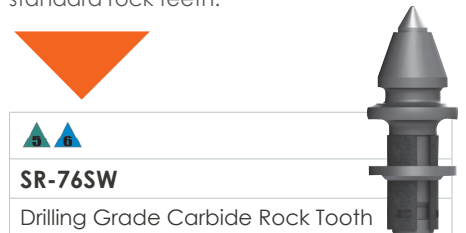
**C30 Puller**  
**LBS | 3**  
**PN | 134090**



**C123 Puller**  
**LBS | 3**  
**PN | 134091**

The S-RL08 Teeth will need the C123 Puller for removal.

Strata<sup>®</sup> Drilling Grade Conical Teeth were developed by Pengo for the Drilling industry. They have been proven to out-perform standard rock teeth.



### SR-76SW

Drilling Grade Carbide Rock Tooth provides longer tooth life in extreme hard drilling conditions

**LBS | .7**  
**PN | 850035**

