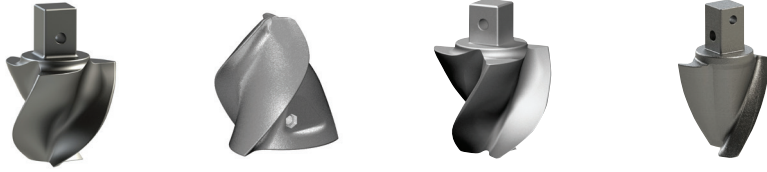


FLAT BOTTOM DIRT AUGER

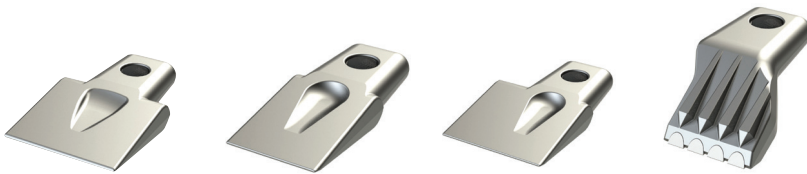


PARTS | Pilot Bits



TF-600	TF-600	TF-1000	SD-60-175
with 1.75" square stem	use PA-182 or 141L Drive Lug	with 2.5" square stem	with 1.75" square stem
LBS 16	LBS 8.5	LBS 43	LBS 15
PN 137331	PN 137357	PN 137348	PN 135983
1.75 Adapter	141L Adapter	2.5 Adapter	1.75 Adapter
LBS 4.3	LBS 1.3	LBS 17.84	LBS 4.3
PN 151593	PN 151970	PN 151598	PN 151593

PARTS | Taper Fit Teeth



132	201	211	299
LBS 2	LBS 2.1	LBS 2.9	LBS 2.8
PN 134406	PN 170030	PN 170034	PN 134659
20 pc. Bucket	20 pc. Bucket	20 pc. Bucket	20 pc. Bucket
LBS 40	LBS 42	LBS 58	LBS 56
PN 850236	PN 850226	PN 850227	PN 850228

Pallet quantities available.

PARTS | Bucket Teeth

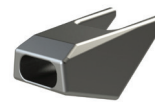
Pengo Foundation Dirt Augers can be built with the following Bucket Teeth!



X220	X330
LBS 6	LBS 12.2
PN 210250	PN 210254
use 220 Bucket Adapter (PN 210190) and P160 Roll Pin (PN 210256) to complete assembly	use 330 Bucket Adapter (PN 210192) and P330 Flex Pin (PN 210257) to complete assembly

INSTALLATION & REMOVAL TOOLS

716 Punch	PRT 160	PRT 290
LBS 3	LBS 3	LBS 3
Installation	for P160	for P330
PN 210197	PN 210196	PN 210198



WO-8 Pocket
LBS 2.5
PN 171577



Horseshoe Nail
LBS .1
PN 137620

May Be Used with Taper Fit Teeth To Secure Teeth In Place.



S-PATTERN DIRT AUGER



PARTS | Pilot Bits



TF-600
with 1.75" square stem
LBS 16
PN 137331



TF-600
use PA-182 or 141L Drive Lug
LBS 8.5
PN 137357



TF-1000
with 2.5" square stem
LBS 43
PN 137348



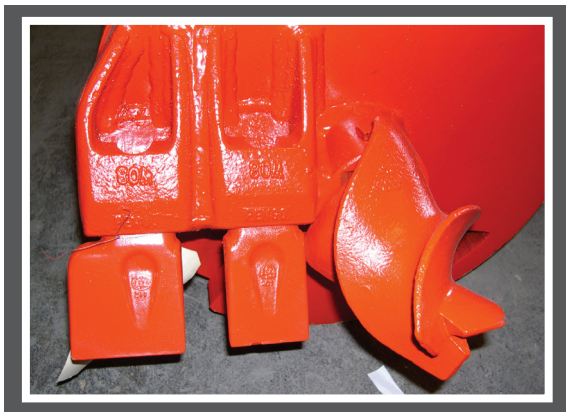
SD-60-175
with 1.75" square stem
LBS 15
PN 135983

1.75 Adapter
LBS 4.3
PN 151593

141L Adapter
LBS 1.3
PN 151970

2.5 Adapter
LBS 17.84
PN 151598

1.75 Adapter
LBS 4.3
PN 151593



PARTS | Taper Fit Teeth



132
LBS 2
PN 134406



201
LBS 2.1
PN 170030



211
LBS 2.9
PN 170034



299
LBS 2.8
PN 134659

20 pc. Bucket
LBS 40
PN 850236

20 pc. Bucket
LBS 42
PN 850226

20 pc. Bucket
LBS 58
PN 850227

20 pc. Bucket
LBS 56
PN 850228

Pallet quantities available.

PARTS | Bucket Teeth



X220
LBS 6
PN 210250

use 220 Bucket Adapter (PN 210190) and P160 Roll Pin (PN 210256) to complete assembly



X330
LBS 12.2
PN 210254

use 330 Bucket Adapter (PN 210192) and P330 Flex Pin (PN 210257) to complete assembly

Pengo Foundation Dirt Augers can be built with the following Bucket Teeth!

INSTALLATION & REMOVAL TOOLS



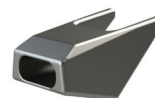
716 Punch
LBS 3
Installation
PN 210197



PRT 160
LBS 3
for P160
PN 210196



PRT 290
LBS 3
for P330
PN 210198



WO-8 Pocket
LBS 2.5
PN 171577



Horseshoe Nail
LBS .1
PN 137620

May Be Used with Taper Fit Teeth To Secure Teeth In Place.