

# AG AGGRESSOR® AUGER



For Use With PTO Driven Tractors

42" and 48" OAL

2" Round Recessed Safety Hub A Pengo Exclusive Feature!



3/8" Thick, Helicoid Flight

Available in 42" or 48" Overall Length

1/2" Cast Alloy Steel Shank

40°/50° Dual Angle Teeth with 3-Point Lock & Bolt Fasteners

SB-35 S175 Pilot Bit

40°/50° Dual Angle Teeth with 3-Point Lock & Bolt Fasteners



## CONNECTIONS

ROUND **2"**

## AUGER DIAMETERS

6 9" 12"

## CUT DIAMETER

*Cut diameter is 1 1/2" larger than auger diameter.*

## DRILLING SOIL CONDITIONS:



Pengo's Ag Aggressor® auger is designed for medium duty applications while remaining both cost efficient and safety focused. Featuring a 2" round safety hub, all hardware is recessed inside the hub to prevent all potential entanglements. Utilizing Pengo's two fluted pilot design, the Ag Aggressor® is a well rounded general purpose auger offering superior efficiency in dry, loose soil.

# AG AGGRESSOR® AUGER



## AUGERS | 42" Overall Length

ITEM	DIA	NO. TEETH	LBS	PN
6-LTA-42	6"	2	35	553225
9-LTA-42	9"	4	52	553226
12-LTA-42	12"	4	58	553227

## AUGERS | 48" Overall Length

ITEM	DIA	NO. TEETH	LBS	PN
6-LTA-48	6"	2	45	553228
9-LTA-48	9"	4	52	553229
12-LTA-48	12"	4	68	553230



*Pengo Pilots and Teeth are rated for drilling conditions that may or may not be applicable to your power source. Refer to the soil chart listed on page 2 of this catalog to determine which tooth type is right for the job.*



## PARTS | Pilot Bits

<b>SB-35 S175</b>
<b>LBS   3.9</b>
<b>PN   151318</b>



The SB-35 two-fluted pilot is ideal for dry soil conditions.

## PARTS | Teeth

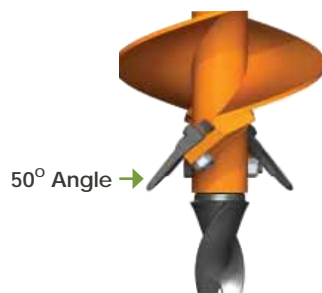
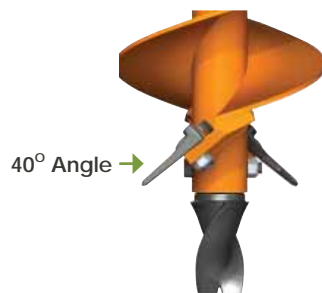
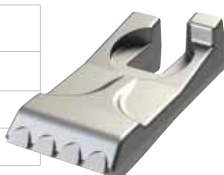
<b>40/50 Tooth</b>
<b>LBS   .5</b>
<b>PN   134501</b>



<b>40/50HFF Tooth</b>
<b>LBS   .5</b>
<b>PN   134802</b>



<b>40/50C Tooth</b>
<b>LBS   .65</b>
<b>PN   134519</b>



AGGRESSOR® auger teeth are for use in dirt, abrasive soil or fracturable rock, depending on the type of tooth you are using. All types of the 40/50 tooth can be used at either a 40° or 50° angle providing different attack angles based on your drilling condition.

**THE NUTS & BOLTS:**  
for 40/50 Teeth  
Carriage Bolt PN 134677  
Hex Nut Lock PN 134527



# AGGRESSOR®