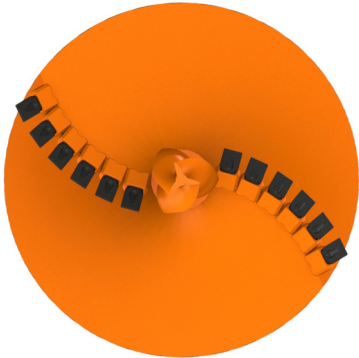


# DIRT AUGERS

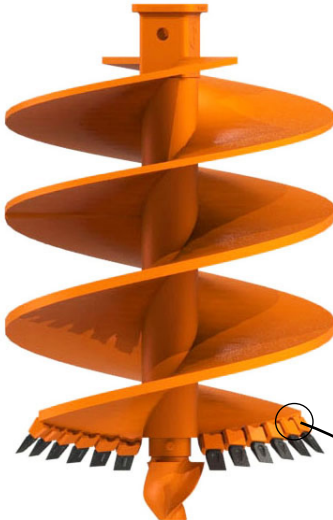


pengoattachments.com | 800.599.0211

**BOTTOM VIEW**



**DOUBLE CUT  
DOUBLE CARRY**



**DOUBLE CUT  
SINGLE CARRY**

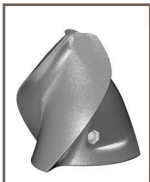


The Standard Dirt Augers are built with the following components:  
TriFlow® Pilot Bit, 201 and 211 Taper Fit Teeth and WO-8S Holders.

The All New WO-8Short Holder was designed to be embedded into the leading edge of the holder.



**REORDER PARTS:**



**TF-600**  
137357  
8.5 lbs.



**TF-600 w/stem**  
137331  
25 lbs.



**TF-1000**  
137348  
43 lbs.



**201 Tooth**  
170030  
2.1 lbs.  
bucket qty. 20



**211 Tooth**  
170034  
3.5 lbs.  
bucket qty. 20

Standard Overall Length: no less than 48"  
Standard Flight Thickness: 1" or 1 1/2"  
OD 14" - 24": 4" x 1" Center Shaft  
OD 30" - 72": 6" x 1" Center Shaft  
OD 84" - 96": 8" x 1" Center Shaft  
Diameters Available: 14" to 96"

The PENGO foundation dirt augers withstand the rigors of your job. Both double cut, single carry and double cut, double carry augers feature the patented TriFlow® pilot bit and taper-fit dirt teeth. The hard-faced flight comes in thickness of 1" or 1 1/2" standard, other thickness are available upon request.

The overall length of the auger varies but will not be less than 48".



**141L Adapter**  
151970  
1.3 lbs.  
use with TF-600



**WO-8S Holder**  
171579  
3.7 lbs.



**1.75 Adapter**  
151593  
4.3 lbs.  
use with TF-600 w/stem



**2.5 Adapter**  
151598  
17.84 lbs.  
use with TF-1000

**CARRIER GUIDE:**



**PENGO FOUNDATION AUGERS**

STANDARD AUGERS LISTED ABOVE - Special Center Shafts and Custom Orders Available.  
Custom orders cannot be canceled and are non-returnable.

Images not to scale.