



FLAT-BOTTOM DIRT AUGERS

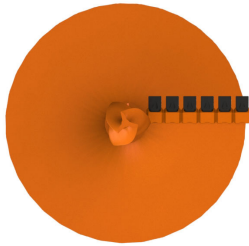


pengoattachments.com | 800.599.0211

SINGLE CUT
SINGLE CARRY



SC/SC
BOTTOM VIEW



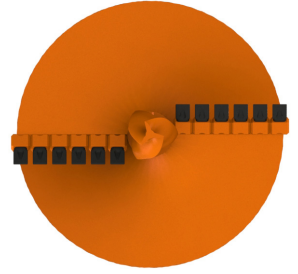
DOUBLE CUT
SINGLE CARRY



DOUBLE CUT
DOUBLE CARRY



DC/DC BOTTOM VIEW



The All New WO-8Short Holder was designed to be embedded into the leading edge of the holder.



The Standard Dirt Augers are built with the following components:
TriFlow® Pilot Bit, 201 and 211 Taper Fit Teeth and the NEW WO-8S Holders.

PENGO FOUNDATION AUGERS

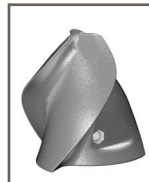
Standard Overall Length: no less than 48"
Standard Flight Thickness: 1" or 1 1/2"
OD 14" - 24": 4" x 1" Center Shaft
OD 30" - 72": 6" x 1" Center Shaft
OD 84" - 96": 8" x 1" Center Shaft
Diameters Available: 14" to 96"

When installing concrete footings, the all new Flat Bottom auger is the answer to what tool to use. This auger will keep your hole flat and drill to depths based on your customized specifications.

There is no substitute! Standard hard-faced flight options of 1" or 1 1/2" thick single cut/single carry, double cut/single carry and double cut/double carry will provide the maximum strength under pressure.

The standard hard-faced edges will help eliminate the field repair time and increase your productivity.

REORDER PARTS:



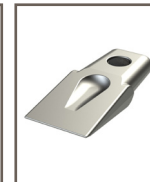
TF-600
137357
8.5 lbs.



TF-600 w/stem
137331
25 lbs.



TF-1000
137348
43 lbs.



201 Tooth
170030
2.1 lbs.
bucket qty. 20



211 Tooth
170034
3.5 lbs.
bucket qty. 20



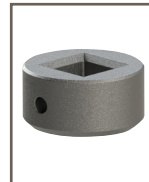
141L Adapter
151970
1.3 lbs.
use with TF-600



WO-8S Holder
171579
3.7 lbs.



1.75 Adapter
151593
4.3 lbs.
use with TF-600 w/stem



2.5 Adapter
151598
17.84 lbs.
use with TF-1000



CARRIER GUIDE:



STANDARD AUGERS LISTED ABOVE - Special Center Shafts and Custom Orders Available.
Custom orders cannot be canceled and are non-returnable.

Images not to scale.