

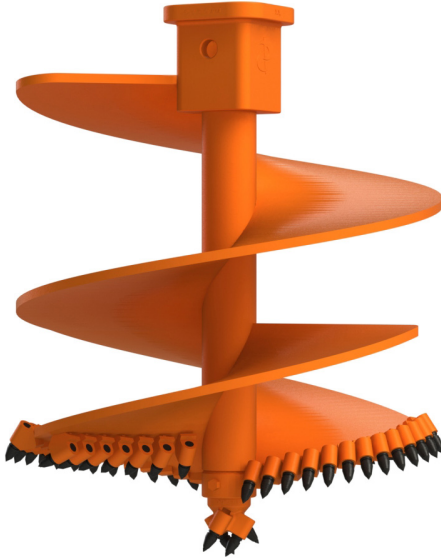


DOUBLE ROW ROCK AUGERS

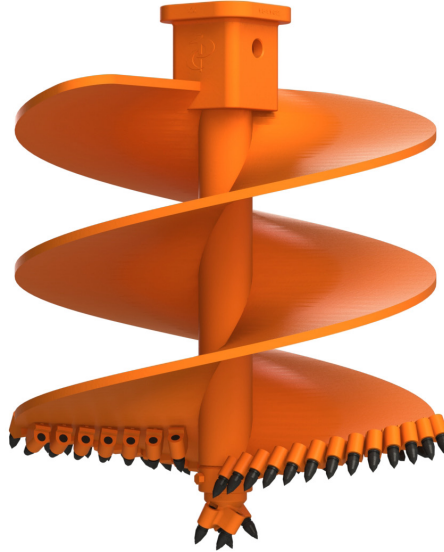


pengoattachments.com | 800.599.0211

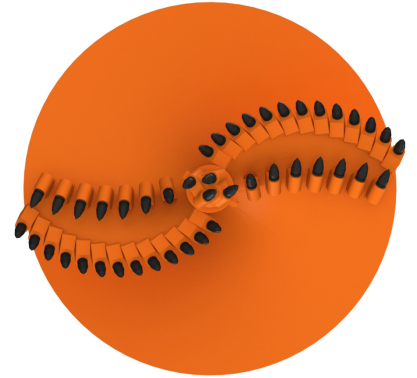
DOUBLE CUT
SINGLE CARRY



DOUBLE CUT
DOUBLE CARRY



BOTTOM VIEW



The Standard Double Row Rock Augers are built with the following components:
C31-HD Pilot Bit, Strata® SR-100 and P-30 Holders.

PENGO FOUNDATION AUGERS

Standard Overall Length: no less than 48"
Standard Flight Thickness: 1" or 1 1/2"
OD 14" - 24": 4" x 1" Center Shaft
OD 30" - 60": 6" x 1" Center Shaft
OD 66" - 96": 8" x 1" Center Shaft
Standard Diameters Available:
14", 16", 18", 24", 30", 36", 42", 48", 54",
60", 66", 72", 84", and 96"

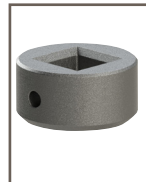
When drilling conditions are extreme and there is a need for more carbide on the ground, the Double Row Rock Auger is your solution. The special carbide tip of the Strata® drilling grade conical tooth coupled with the dual S-pattern of the double row auger will hold up to the rigors of your job.

Strata® teeth have been proven to last longer than standard conical teeth thus meaning increased production time and productivity.

REORDER PARTS:



**C31-HD
2.5" Stem**
135913
2.5 Pin/Washer
30 lbs.



2.5 Adapter
151598
6" OD
17.84 lbs.
use with C31HD



SR-100 Tooth
850201
38.5 lbs.
bucket qty. 35



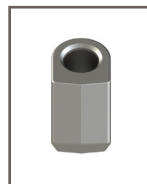
S-31HD Tooth
850210
38.5 lbs.
bucket qty. 35



S-31 Tooth
850208
37 lbs.
bucket qty. 35



The above tooth part numbers are for buckets not each tooth (unless noted). When ordering buckets you may use these numbers. If applicable, pallet numbers are listed on page 12.



P-30 Holder
850224
31.2 lbs.
bucket qty. 12

The above holder part numbers are for buckets not each tooth. When ordering buckets you may use these numbers.

CARRIER GUIDE:



STANDARD AUGERS LISTED ABOVE - Special Center Shafts and Custom Orders Available.
Custom orders cannot be canceled and are non-returnable.

Images not to scale.